

Carleton College Vesper Service

Skinner Memorial Chapel

Northfield, Minnesota

Sunday, October 12, 1924

Seven o'clock

ORGAN PRELUDE

Processional Hymn 108

Invocation (Seated)

THE LORD'S PRAYER, Sung by the Choir and Congregation (Hymnal No. 467, p. 392. Seated)

THE COMMANDMENTS:

I. Thou shalt love the Lord thy God with all thy heart, and with all thy soul, and with all thy mind. This is the first and great commandment.

RESPONSE:

Lord, have mercy upon us, and incline our hearts to keep this law. (Hymnal No. 468, p. 392. Seated)

II. And the second is like unto it: Thou shalt love thy neighbor as thyself.

RESPONSE:

Lord, have mercy upon us, and incline our hearts to keep this law.

III. A new commandment I give unto you, That ye love one another, as I have loved you.

RESPONSE:

Lord, have mercy upon us, and write all these thy laws in our hearts, we beseech thee.

SOLO: There is a Green Hill

GOUNOD

MRS. MORSBACH

COLLECT (said by minister)

VENITE, EXULTEMUS DOMINO (Hymnal No. 455, p. 383. Standing)

A LESSON FROM THE SCRIPTURES

ANTHEM: Our Master Hath a Garden

Crimp

PRAYER AND RESPONSE (Hymnal 6-8, No. 458, p. 386.)

HYMN, No. 391 (All standing)

ADDRESS by PROFESSOR C. A. DUNIWAY, Carleton College

NUNC DIMITTIS (Hymnal No. 463.)

RECESSIONAL HYMN 388

BENEDICTION AND AMEN

ORGAN POSTLUDE

Dedication of the Organ

Skinner Memorial Chapel
Carleton College

REGITAL

BY

W. LYNNWOOD FARNAM

EMMANUEL CHURCH, BOSTON



Eight o'clock
Monday Evening, October Nine
Nineteen Hundred Sixteen

Formal Announcement of the Gift of the Organ
PRESIDENT COWLING

Prayer of Dedication
REV. E. B. DEAN, Northfield

Recital
W. LYNNWOOD FARNAM

Program

HOSANNAH (G major) *Lemmens*

MINUETTO (B minor) *Gigout*

SCHERZO (from 4th Symphony) }
CHORAL From Symphonie Romane } *Widor*
CANTILENE }
ALLEGRO VIVACE (from 5th Symphony) }

PRELUDE AND FUGUE in G minor *Bach*
(Schirmer Edition, Vol. IV., No. 11)

MEDITATION (A major) *Bairstow*

Thou hidden love of God, whose height,
Whose depth unfathomed no man knows:
I see from far Thy beauteous light,
Inly I sigh for Thy repose:
My heart is pained, nor can it be
At rest, till it finds rest in Thee.

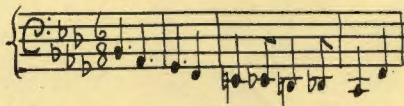
SUNRISE *Georges Jacob*

ALLEGRO VIVACE (from 1st Symphony) *Vierne*

CHACONNE (op. 73, B flat minor) *Karg-Elert*

(a) Introduction

(b) 35 Variations on the following ground-bass:



(c) Epilogue

SPECIFICATIONS OF THE SKINNER MEMORIAL CHAPEL
ORGAN

Built by THE J. W. STEERE & SON ORGAN CO.,
of Springfield, Mass.

FOUR MANUALS, COMPASS CC TO C4 61 NOTES

COMPASS OF PEDALS CCC TO G1, 32 NOTES

Great Organ

1	16'	Bourdon (from No. 54)	Wood 61 Notes
2	8'	First Diapason	Wood & Metal 61 Pipes
3	8'	Second Diapason	Metal 61 "
4	8'	Gemshorn	Metal 61 "
5	8'	Gross Floete (Pedal extension)	Wood 61 Notes
6	4'	Octave	Metal 61 Pipes
7	4'	Wald Floete	Wood & Metal 61 "
8	16'	Ophicleide	Wood & Metal 61 Notes
9	8'	Tuba	Metal 61 "
10	4'	Clarion	Metal 61 "
11		Chimes (from Echo)	20 "

Swell Organ

			6-inch wind
12	16'	Bourdon	Wood & Metal 73 Pipes
13	8'	Diapason	Wood & Metal 73 "
14	8'	Salicional	Metal 73 "
15	8'	Aeoline	Metal 73 "
16	8'	Voix Celeste (with No. 14)	Metal 73 "
17	8'	Gedackt	Wood & Metal 73 "
18	4'	Harmonic Flute	Metal 73 "
19	4'	Salicet	Metal 73 "
20	2'	Flautino	Metal 61 "
21	3	Rks. Solo Mixture	Metal 219 "
22	16'	Fagotto	Metal 73 "
23	8'	Cornoepen	Metal 73 "
24	8'	Oboe	Metal 73 "
25	8'	Vox Humana	Metal 61 "
26		Tremolo	

Choir Organ

In a Swell-Box

			6-inch wind
27	16'	Gamba	Metal 73 Pipes
28	8'	Diapason	Metal 73 "
29	8'	Dulciana	Metal 73 "
30	8'	Quintadena	Metal 73 "
31	8'	Concert Flute	Wood & Metal 73 "
32	8'	Flute Celeste (Tenor C, with No. 31)	Wood & Metal 61 "
33	4'	Flute D'Amour	Wood & Metal 73 "
34	8'	Clarinet	Metal 61 "
35		Celesta (Tenor C to c4)	49 Notes
36		Tremolo	

Solo Organ

In a Swell-Box

			10 & 15-inch wind
37	8'	Philomela	Wood & Metal 73 Pipes
38	8'	Viole d'Orchestre	Metal 73 "
39	8'	Viole Celeste (with No. 38)	Metal 73 "
40	4'	Hohlpipeife	Wood & Metal 73 "
41	8'	Orchestral Oboe	Metal 61 "
42	16'	Ophicleide	Wood & Metal 73 Notes
43	8'	Tuba	Metal 73 "
44	4'	Clarion	Metal 61 "
45		Tremolo	

	Echo Organ	6-inch wind
	In a Swell-Box	
46	8' Muted Viole	Metal 73 Pipes
47	8' Viole Celeste (Tenor C with No. 46)	Metal 61 "
48	8' Fern Floete	Wood & Metal 73 "
49	8' Vox Humana	Metal 61 "
50	Chimes (Tenor A to e2)	20 Notes
51	Tremolo	

	Pedal Organ—Augmented	6-inch wind
52	32' Bourdon (12 pipes extended from No. 54)	Wood 32 Notes
53	16' Diapason	Wood 32 Pipes
54	16' Bourdon	Wood 32 "
55	16' Gedackt (from No. 12)	Wood 32 Notes
56	16' Gamba (from No. 27)	Metal 32 "
57	8' Octave (from No. 53)	Wood 32 "
58	8' Gedackt (from No. 13)	Wood 32 "
59	8' Violoncello (from No. 27)	Metal 32 "
60	16' Ophicleide	Wood & Metal 32 "
61	8' Tuba	Metal 32 "
62	4' Clarion	Metal 32 "
63	8' Flute (from No. 5)	Wood 32 "

Couplers and Accessories

Swell to Great		Solo to Great		To be Operated by oscillating tablets Unisons on and off in key frames
Swell to Great	4'	Solo to Great	4'	
Swell to Great	16'	Solo to Great	16'	
Swell to Swell	4'	Solo to Solo	4'	
Swell to Swell	16'	Solo to Solo	16'	
Swell to Choir		Solo to Swell		
Swell to Choir	4'	Solo to Pedal		
Swell to Choir	16'	Solo to Pedal	4'	
Swell to Pedal		Solo Unison Off		
Swell to Pedal	4'	Echo to Echo	4'	
Swell Unison Off		Echo to Echo	16'	
Choir to Great		Echo to Great		
Choir to Great	4'	Echo to Choir		
Choir to Great	16'	Echo to Pedal		
Choir to Choir	4'	Echo Unison Off		
Echo on Solo off		Great to Great	4'	
Choir to Choir	16'	Great to Pedal		
Choir to Pedal		Great to Pedal	4'	
Choir Unison Off				

Wind Indicator
Crescendo Indicator
Sforzando Indicator

Adjustable Combinations

Operated by Pistons placed under the respective Manuals.
Visibly moving Registers. Single setter system.

1-2-3-4-5-0	Great and Pedal
1-2-3-4-5-6-0	Swell and Pedal
1-2-3-4-0	Choir and Pedal
1-2-3-4-5-0	Solo and Pedal
1-2-3-0	Echo and Pedal
1-2-3-4-0	Entire Organ not affecting Registers
1-2-3-4-5-6-0	Pedal Only (Toe Pistons)

Pedal On and Off Pistons on each Manual

Pedal Movements

Balanced Swell
Balanced Choir
Balanced Solo and Echo
Balanced Crescendo (adjustable)
Sforzando (Full Organ) Reversible
Great to Pedal, Reversible
All Couplers, Reversible
Unison Couplers, Reversible
Pedal to raise chime dampers
Locking Pedal connecting all expression Pedals to Solo Pedal